

7,140 GALLON (170BBL)

Double Wall Steel Mini Frac Tank

Our Mini Frac Tank rentals are perfect for smaller sites like refineries and industrial, construction, and manufacturing industries where space is limited. The Steel Mini Frac Tank rentals delivers where a smaller footprint is required. Our Mini Steel Tank serves the same purpose as a standard steel tank, but with approximately half the capacity.



*Photos are representational; actual products vary. Additional product plans and specifications may vary from those shown and are subject to in-stock availability.



Dimensions

Length:
23' 2" (outside),
19' 3" (inside)

Width:
8' 6" (outside),
5' 16" (inside)

Height:
8' 7 3/4" (outside),
8' 2" (inside)

Capacity: 7,200 gallons (170bbl)

Tare Weight: 18,000 lbs

Construction

Floor: 1/4" A36 plate

Walls:
1/4" A36 plate (interior),
3/16" A36 plate (exterior)

X-members: 1/4" A36 plate

Long Sill: 6 x 2 x 1/4" tubing

Features

Platform:
Outside rail construction
(36 1/2" inside rails)

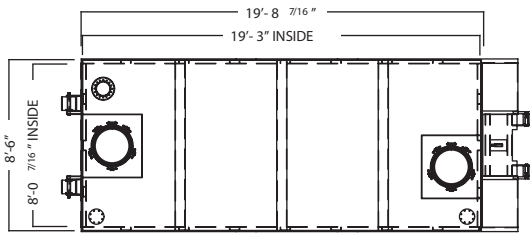
Valves:
One 4" Drain (front)
One 4" Drain (rear)
One 8" P/V Valve (roof)

Manways:
One 22" and 36"
Combo manway (curb)
Two 22" manways (roof)

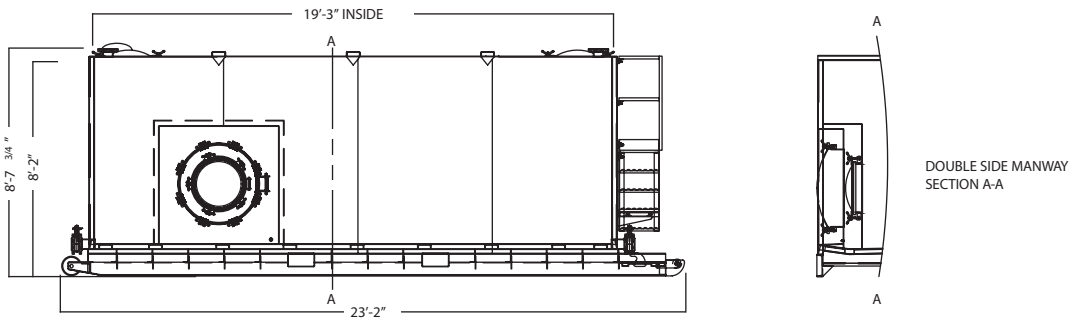
Blind Flange: Two 4" (roof)

Fork Pockets: 12 x 6

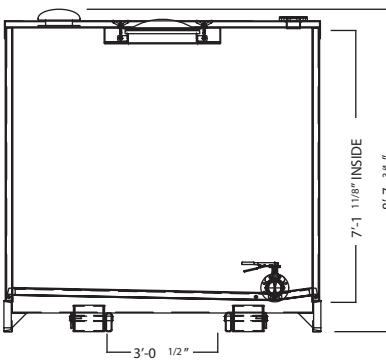
Double Wall Tank Drawing



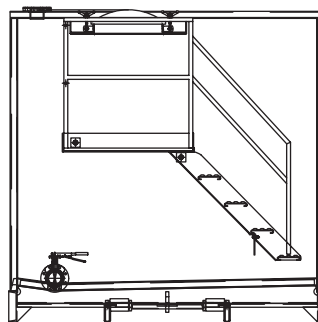
Top View



Side View



Front View



Rear View:

*Some details not shown in all views. Overall dimensions are normal.

*Photos are representational; actual products vary. Additional product plans and specifications may vary from those shown and are subject to in-stock availability.

Learn more at [IroncladEnvironmental.com](https://www.IroncladEnvironmental.com)