

**25 Yard**

# Vacuum Roll Off Box

Vacuum Box rentals from Ironclad Environmental Solutions are perfect for pairing with an air-mover vacuum truck which can vacuum up liquids, dry materials, mixtures of wet and dry materials, and sludge. Now your air-mover vacuum truck can operate even more efficiently by collecting the content's vacuumed in the roll-off vacuum box, allowing the air-mover truck to remain on-site and in-service during vacuum pumping applications.



\*Photos are representational; actual products vary. Additional product plans and specifications may vary from those shown and are subject to in-stock availability.

## Dimensions and Weights

Length: 23' 1 5/8"

Width: 8'

Height: 5' 9 3/8"

Capacity: 25 cubic yard  
(5,049 gallons)

Tare Weight: 11,250 lbs

## Construction

Floor: 1/4" A36 plate

Walls: 1/4" A36 plate

Long Sill: 6 x 2 x 1/4" tubing

Frame: 3/16" tubing

## Features

Drain: Two 4" flanged drains  
(curb and street)

Port: Two 8" (front and rear)

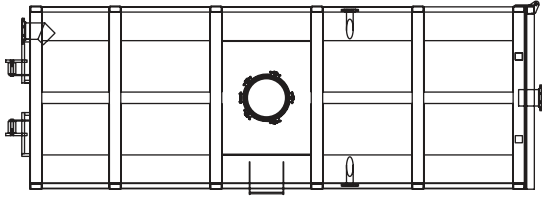
Manways: One 22" (roof)

Wheels: 10" steel

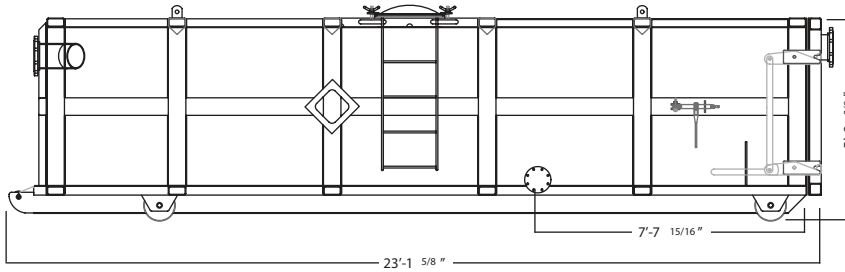
## ROLL OFF BOX

# Vacuum Box Drawing

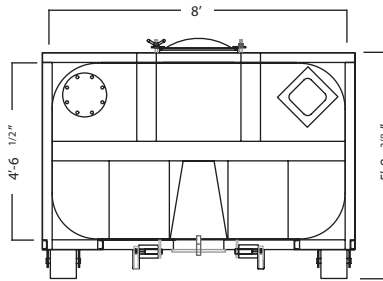
---



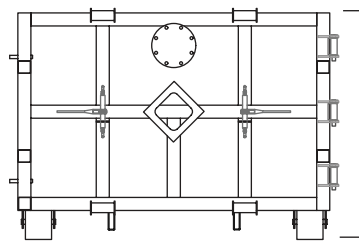
Top View



Side View



Front View



Rear View:

\*Some details not shown in all views. Overall dimensions are normal.

\*Photos are representational; actual products vary. Additional product plans and specifications may vary from those shown and are subject to in-stock availability.