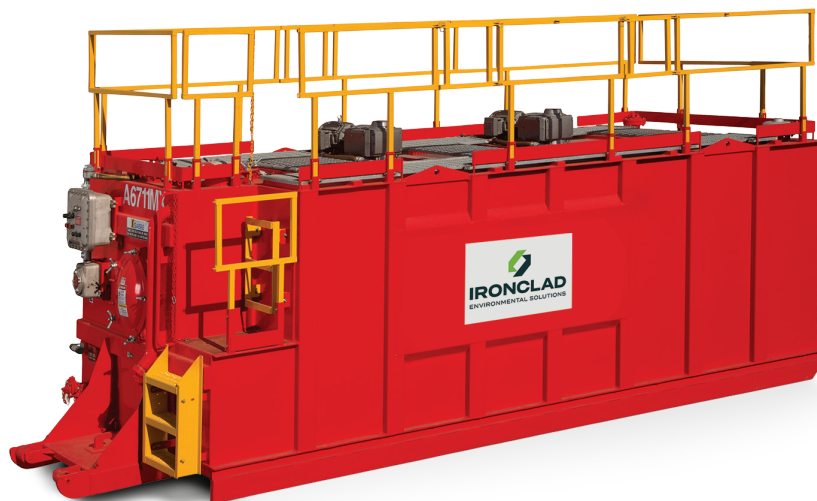


7,070 GALLON (168 BBL)

Mini Mix Tank

The 7,070 Gallon Mini Mix Tank features a smooth-wall interior and no internal rods or corrugations for a more efficient cleanout. A consistent mixing rate can be achieved via two individually controlled 10 hp motor and all material is easily accessed via multiple valved fill and drain ports.



*Photos are representational; actual products vary. Additional product plans and specifications may vary from those shown and are subject to in-stock availability.

Dimensions and Weights

Capacity: 7,070 gallon (168 bbl)
 Height: 6' 6"
 Width: 8' 4"
 Length: 23' 8"
 Tare Weight: 15,400 lbs

Construction

3" fill line
 Three standard 22" side-hinged manways
 Two 4" valved fill/drain ports at floor-level for low point drain out
 2" NPT port located on roof of tank next to top manway
 4" vent with 1 lb pressure
 Roof top heavy duty lift lugs
 .4 oz vacuum pressure relief valve
 Easy-to-clean smooth-wall interior, no corrugations and no internal rods
 Meets Cal/OSHA guidelines
 Nose rail cut-out for easy access when installing hose and fittings on the front/bottom of tank
 Two (2) top connection ports for vapor recovery

Features

Non-slip step materials on stairs and catwalks
 "Safety yellow" rails and catwalks for high visibility
 Safe operation reminder decals
 Tilt up top safety guardrails
 Strapping charts

Options

Carboline 310 epoxy-coated interior
 Heating coils A53 carbon steel or SS316 stainless steel
 Level gauges (fixed or temporary)
 White exterior for MSS compliance
 Audible alarms, strobes and level gauges (digital and mechanical)
 Certain applications warrant mixer blades and paddles to be SS 316 stainless steel
 Certain applications warrant heating coils to be SS 316 stainless steel



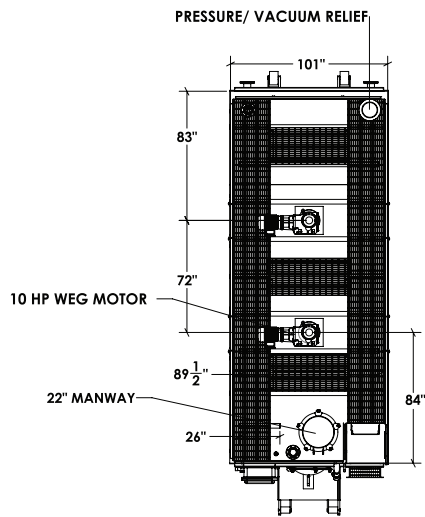
We proudly provide specialty-containment and waste-management solutions, with industry-leading service, safety, access and integrity.

Learn more at IroncladEnvironmental.com

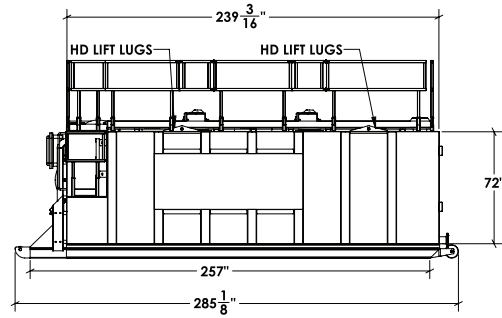
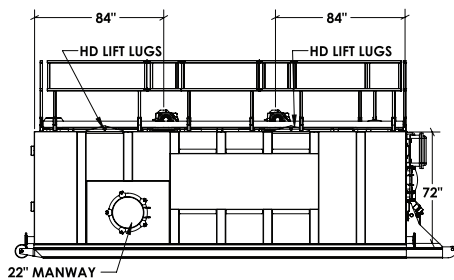


STEEL TANK

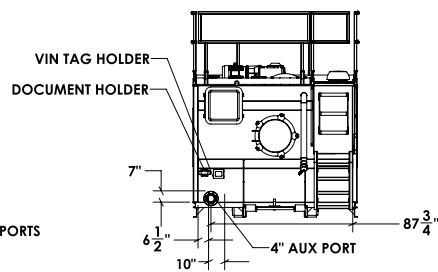
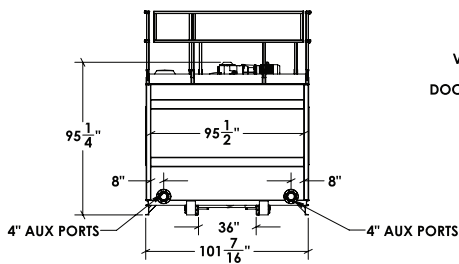
10,080 Gallon Open Top Mud Tank



Top View



Side Views



End Views

*Some details not shown in all views. Overall dimensions are normal.

*Photos are representational; actual products vary. Additional product plans and specifications may vary from those shown and are subject to in-stock availability.

Learn more at [IroncladEnvironmental.com](https://www.ironcladEnvironmental.com)

