

10,080 Gallon (240 bbl)

Open-Top Mud Tank

Our 10,080-Gallon Open-Top Mud Tank delivers dependable storage with smooth-wall construction and a sloped V-bottom for easy drainage. Built with ¼" steel floors and sidewalls and removable top-mounted support braces, it's a flexible, durable solution for drilling and boring operations.

Easy-to-clean, smooth-wall interior



*Photos are representational; actual products vary. Additional product plans and specifications may vary from those shown and are subject to in-stock availability.

Dimensions and Weights

Capacity: 10,080 gal (240 bbl)
 Height: 5' 6"
 Width: 8' 6"
 Length: 46'
 Tare Weight: 18,000 lbs
 All sizes are approximate.

Mechanical Features

Removable top mounted sidewall support braces
 Smooth walls, no interior bracing
 V Sloping bottom for easy drainage
 ¼" Steel plate construction
 Fixed rear axle for increased maneuverability

Safety Features

Front-mounted grip strut step ladder for top access
 Strapping charts
 Safe operation reminder decals

Options

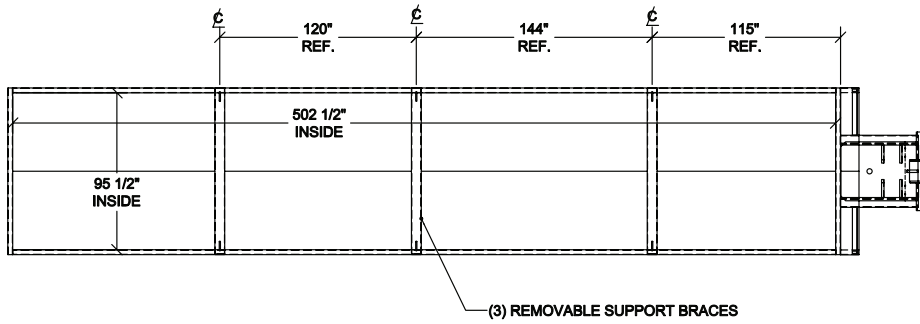
Available with interior coating



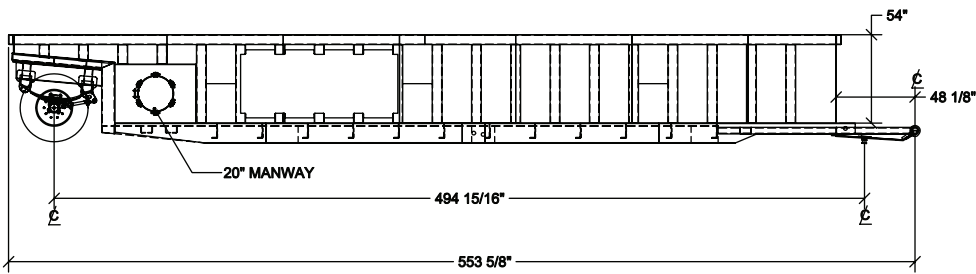
We proudly provide specialty-containment and waste-management solutions, with industry-leading service, safety, access and integrity.

Learn more at IroncladEnvironmental.com

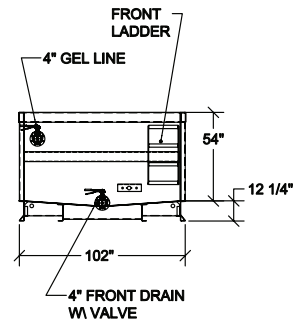
Open-Top Mud Tank



Top View



Side View



Front View



Side Detail

*Some details not shown in all views. Overall dimensions are normal.

*Photos are representational; actual products vary. Additional product plans and specifications may vary from those shown and are subject to in-stock availability.

Learn more at IroncladEnvironmental.com

